

**SR15-10R1**

# Solstice Grow Light Module

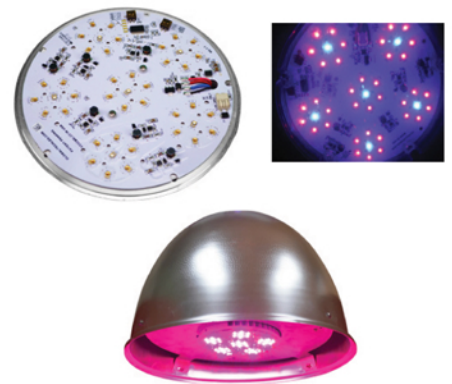
## 90W Grow Light for Photosynthesis

### Description / About

Global Tech LED's Solstice Grow Light delivers photosynthetic light via red and blue LEDs. Ideal for indoor growing of plants, vegetables, and cannabis. Using the Solstice LED Grow Light will increase yields while reducing lighting cost and strain on AC and ventilation.

### Features

- Programmable Power & Timing Settings on board.
- Offers industry-leading 50,000 hrs rated average life.\*
- Low energy consumption with only 90W.
- Low running temperature cuts cost of air conditioning.
- Soft start.
- Made in the USA.
- Red and Blue LEDs target specific wavelengths absorbed by chlorophyll in plants.



\*Rated average life based on engineering testing and probability analysis

### Additional Information

Available in yoke mount (SOLY), plate, threaded rod, and universal plate  
Photometrics:

- Blue light targets stem strength and shortened internode distances
- Red Light targets growth of vegetation and flowering

Warranty:

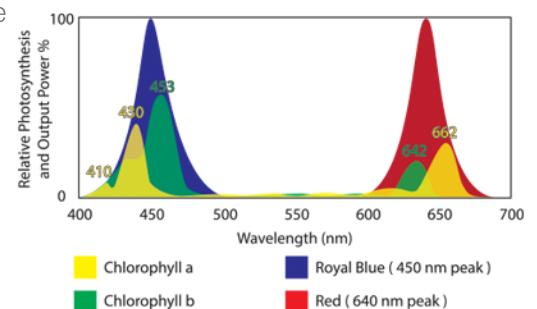
- 10 Year Limited Warranty

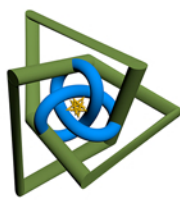
### Photon Spectrum (350nm-750nm)

$\lambda$ (Peak): 648.5 nm

$\lambda$ (Dom): 551.1 nm

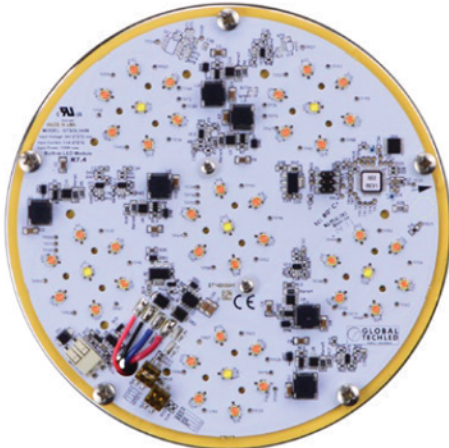
Tristimulus Values: x / y = 0.3476 / 0.1171



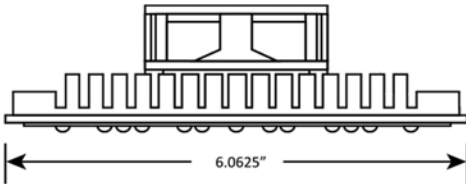


# LEDOLAS

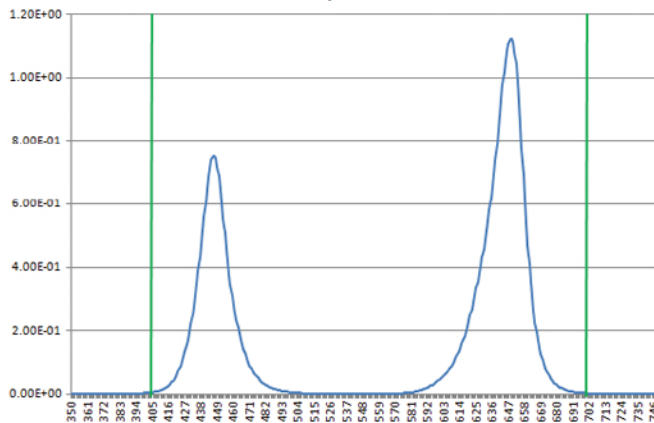
Lighting | Energy | Decontamination



Solstice  
LED Module

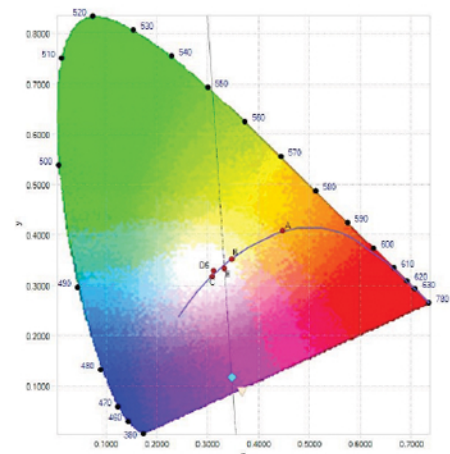


Photons/second



Photon Spectrum (350nm-750nm)

$\lambda(\text{Peak})$ : 648.5 nm  $\lambda(\text{Dom})$ : 551.1 nm



Chromaticity Diagram

Tristimulus Values:  $x / y = 0.3476 / 0.1171$

## Photometric Test Results

Photon Output( $\mu\text{moles/sec}$ )	5.38E+01
Efficacy ( $\mu\text{moles/joule}$ )	0.53
Radiant Flux (W)	12.9
Chroma $u' / \text{Chroma } v'$	0.3748 0.2840
Duv	-0.17021
Blue output (400nm-500nm)%	36.03%
Green output (501nm-600nm)%	0.97%
Red output (601nm-700nm)%	62.75%

## Electrical Test Results

Input Power (Watts)	102.45
Input Voltage (Volts)	119.98
Input Current (Amps)	0.856
Power Factor	0.998
Input Frequency (Hz)	60.0
Stabilization Time	45 minutes
Ambient Temperature	24.1°C
ATHD	4.75%

This technical report may only be quoted in full. Any use for advertising purposes must be granted in writing. This report is the result of a single examination of the object in question and is not generally applicable evaluation of the quality of other products in regular production

This report must not be used by the client to claim product certification, approval, or endorsement by A2LA, NIST, or any agency of the Federal Government



Chicago | LEDOLAS.com | 312.491.9069

Fully Compliant with ARRA Buy American Requirements. Made in the USA.