



16 PVT1 Panel System

Complete Hybrid PVT System

Rapid Deploy Series

8x2 Panel - PPRM0324.01

The PVT1 Power Panel produces all weather, all world PV and Thermal energy. Systems perform in extreme temperatures. PV cell cooling allows the PVT to outperform standard PV in hot climates. Snow melting provides more electrical output in cold climates. Corrosion resistant materials consist of UV stabilized plastic and foam. Systems offer ease of deployment and efficient use of space. Maximum energy harvest per square meter.

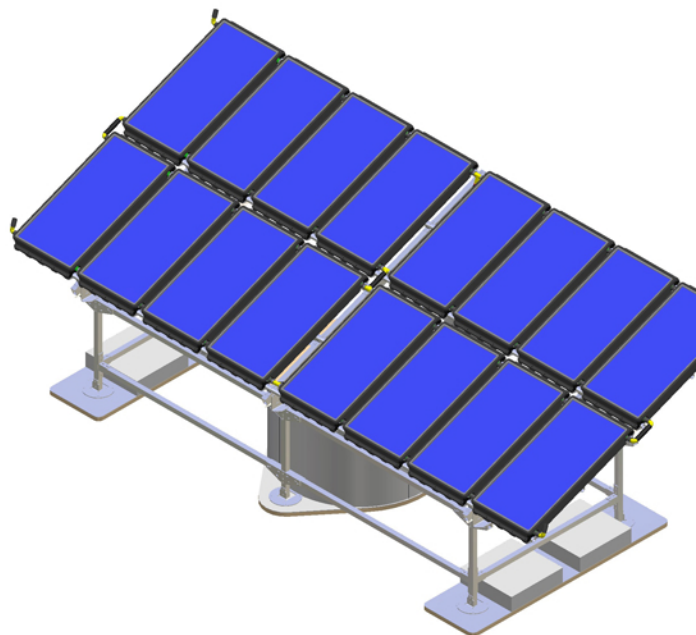
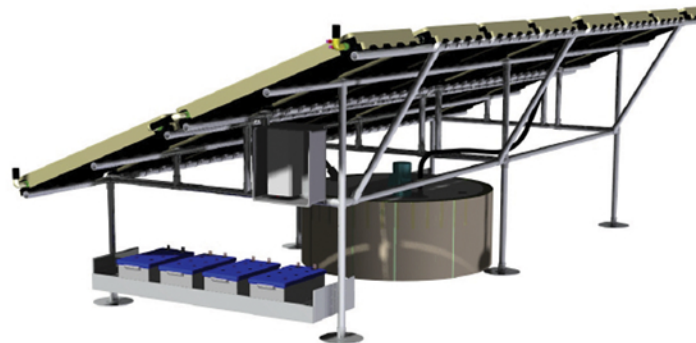
PVT1 Power Panel

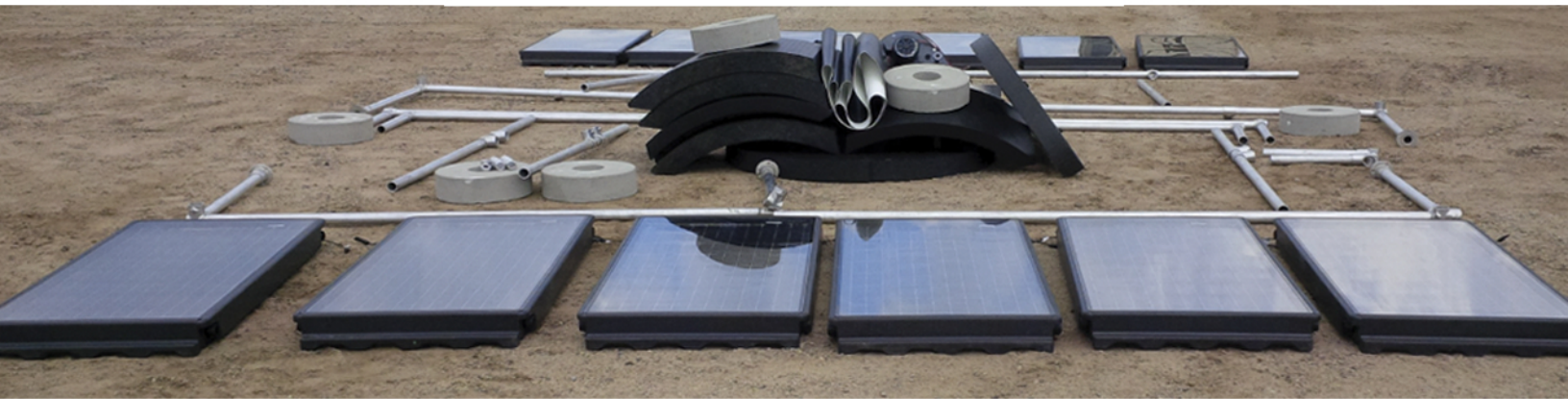
The PVT1 Power Panel combines standard photovoltaic technology with polymer plastics and silicone encapsulants to create active cell cooling and an innovative thermal transfer system in an integrated hybrid enclosure, producing both solar hot water and highly efficient, low-cost electricity in a single product. Certified to UL, SRCC and FSEC PV and Thermal standards. Made in USA.

Thermal Edge Storage Tank

The Thermal Edge Storage Tank provides storage for fluid up to 200 degrees Fahrenheit. The patented modular design allows for easy assembly and installation in existing structures as well as above or below grade exterior locations.

The R-16 durable Expanded Polypropylene material construction creates enhanced thermal insulation stiffness and impact resistance resulting in higher efficiency thermal performance than standard tanks. The high temperature liner is replaceable and customizable.





Electrical Features

1.4 kW Peak PV Generation
Optional Battery Storage AGM
Fixed, Manual or Automated Positioning
25 Year PV Performance Warranty

Thermal Features

6.6 kW Peak Thermal Generation
150 Gallon Storage Capacity
Passive or Active Heat Exchange System

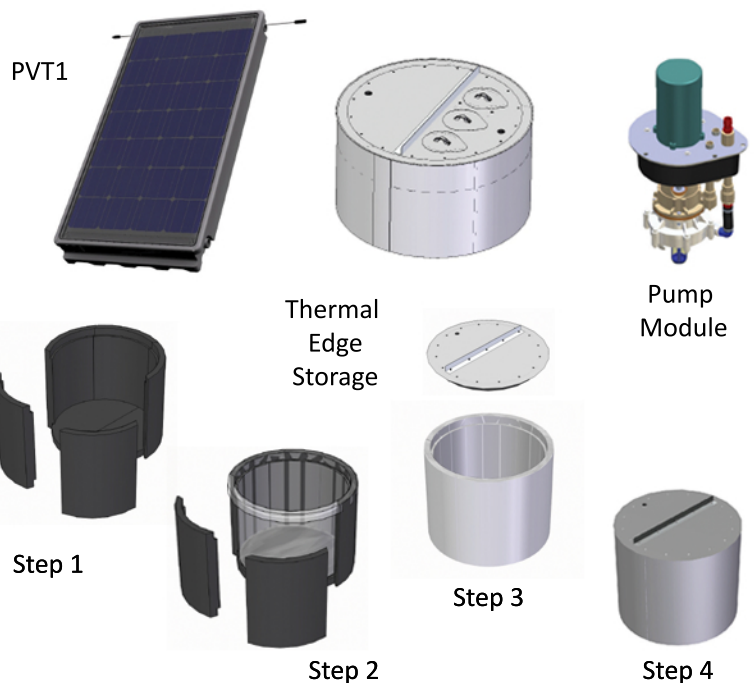
Thermal Edge Storage with Integrated Pump Module

The Power Panel Thermal Edge storage tank provides industry leading thermal storage capacity of 80kWh peak thermal. Designed for use in non-pressurized thermal energy systems.

The Integrated Pump Module is a centrifugal style pump powered by a washdown rated motor specifically designed for use in the Thermal Edge Storage Tank. The module is equipped with temperature and level sensors.

Racking

Power Panel's racking is designed specifically to accommodate the PVT1 system. The angular setting of the modules can be fixed, seasonally adjusted or fully automated.



Four Step Assembly



Storage Tank used as primary rack ballast resulting in no roof assembly or membrane Penetrations.

Related Products

